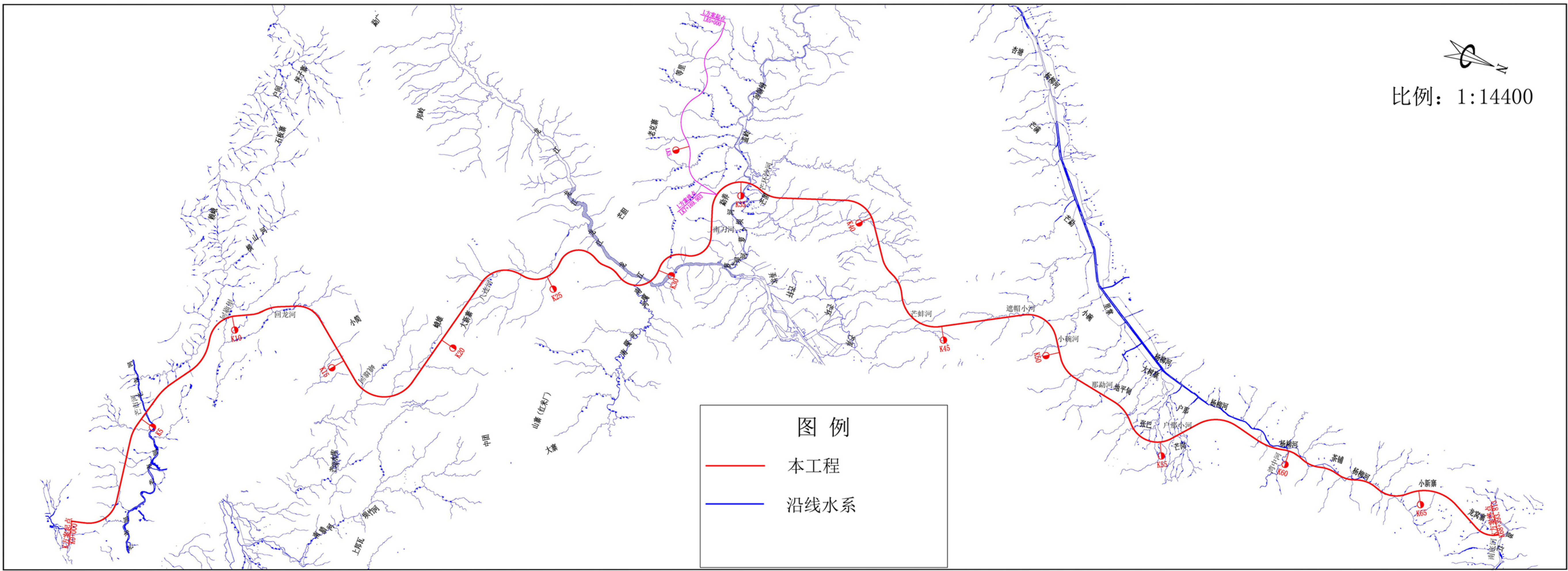
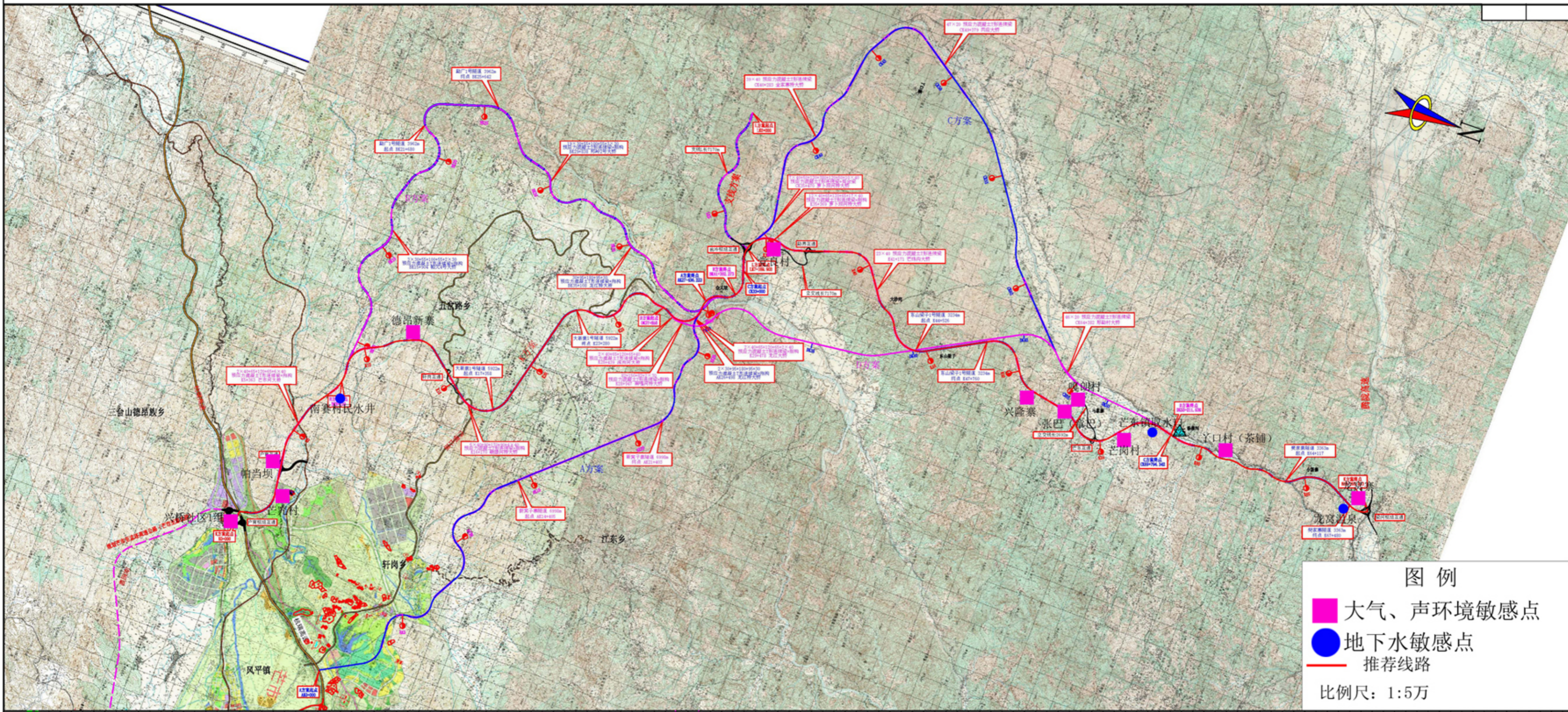


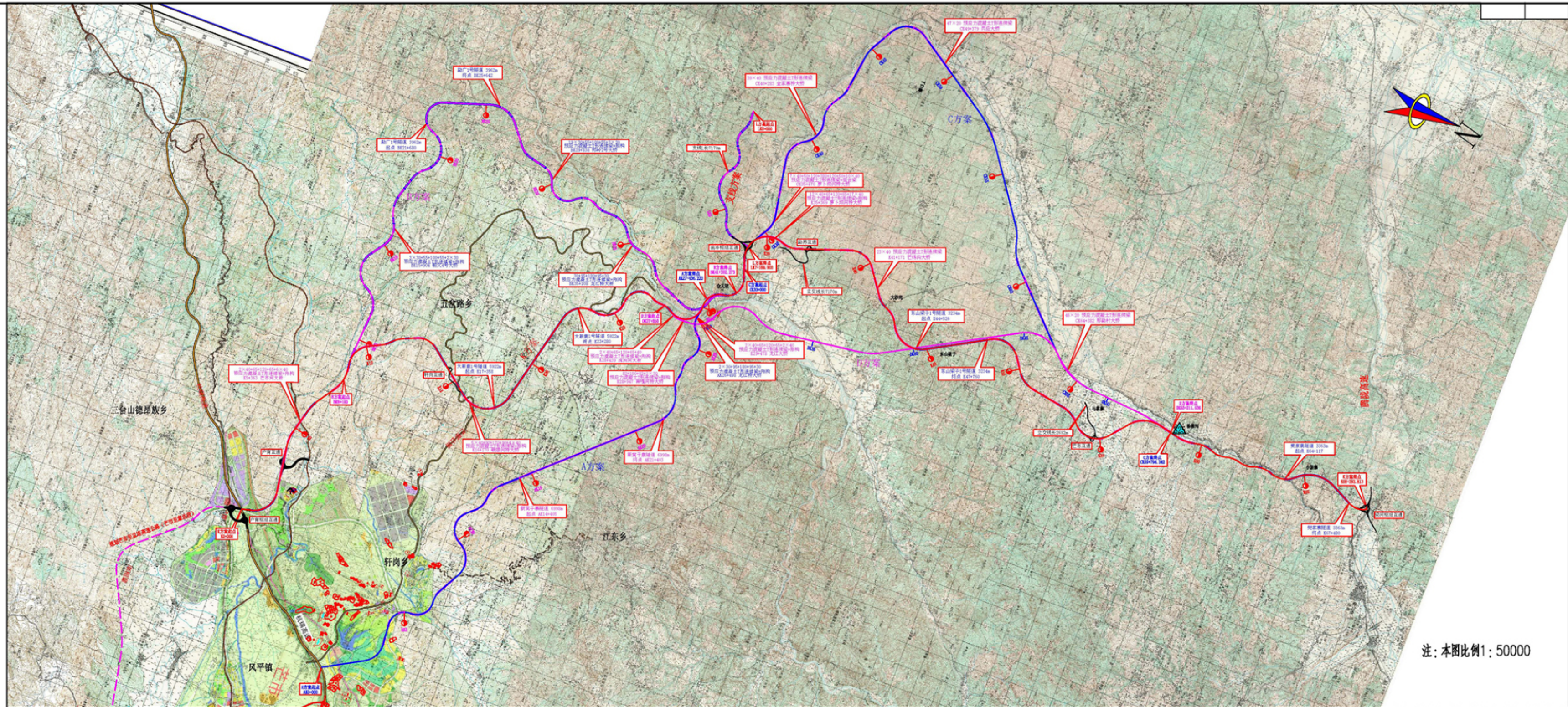
附图1 项目地理位置图



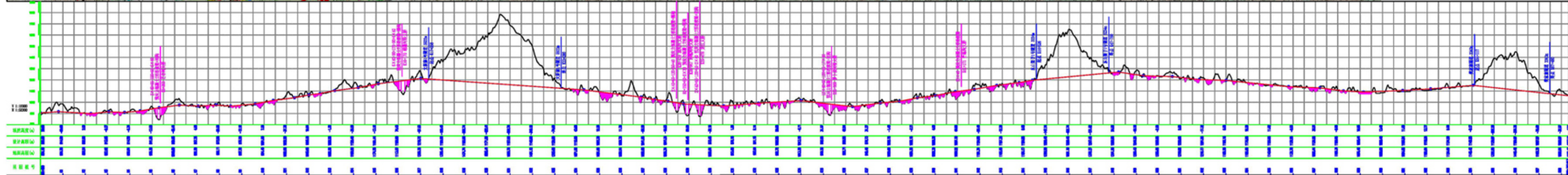
附图2 项目区域水域图



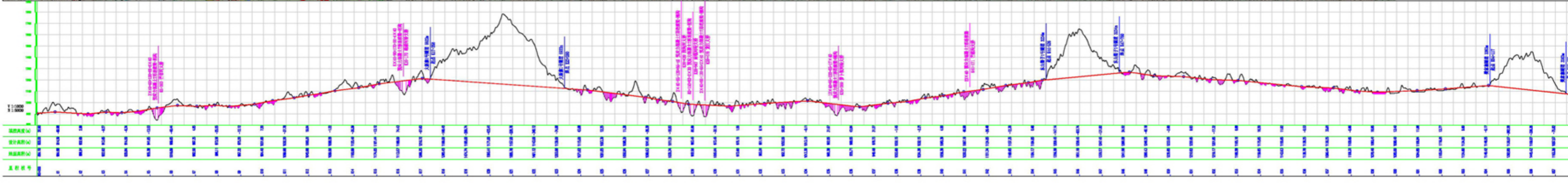
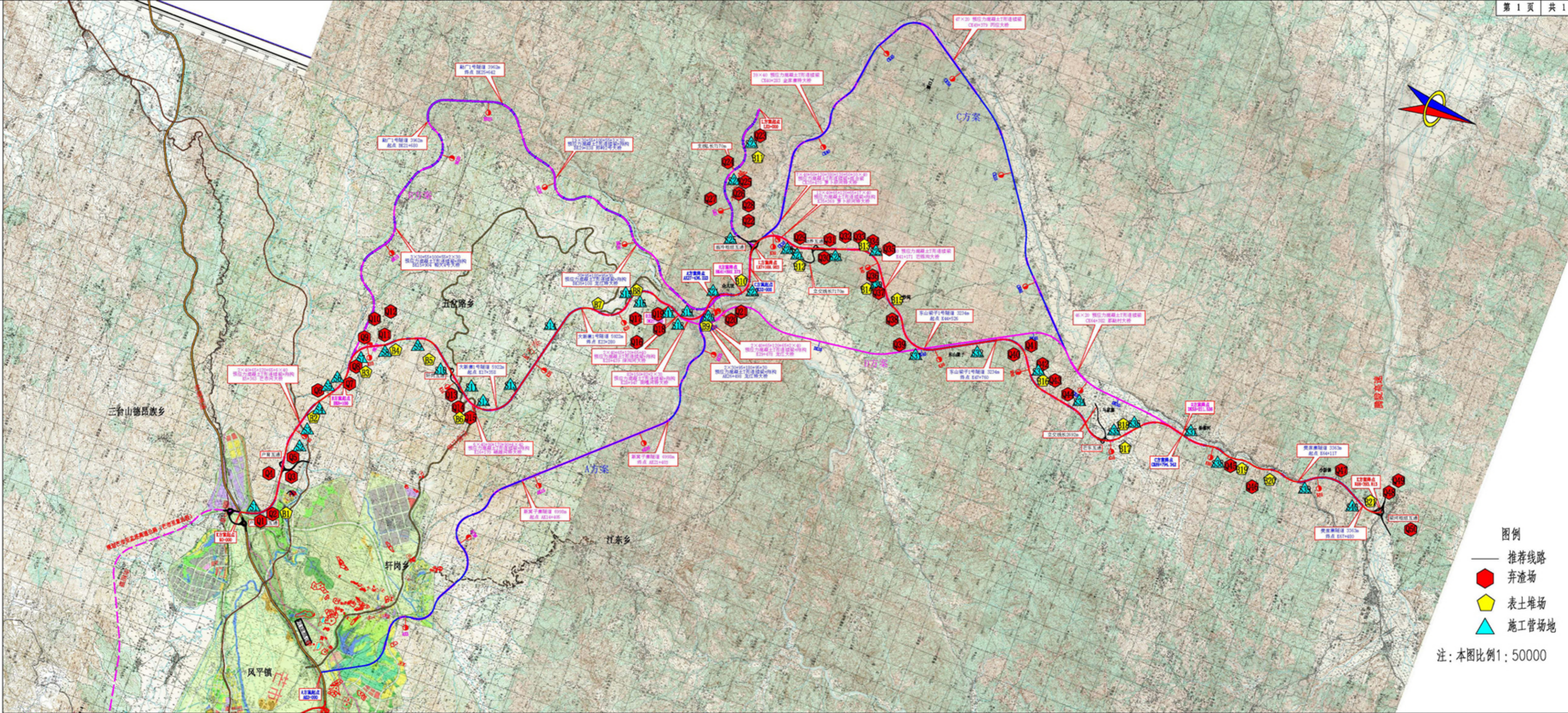
附图3 项目沿线敏感目标图



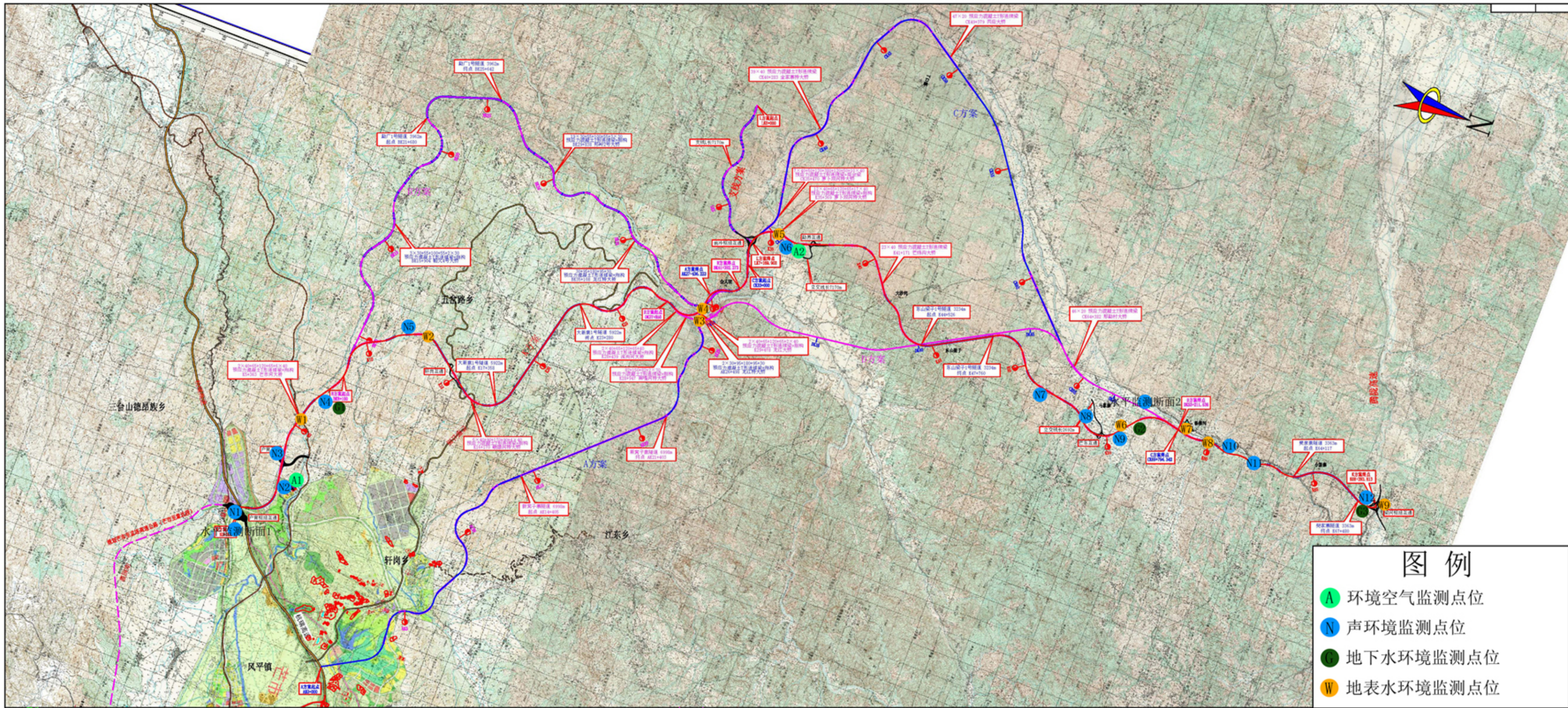
注：本图比例1:50000



附图4 平纵断面图



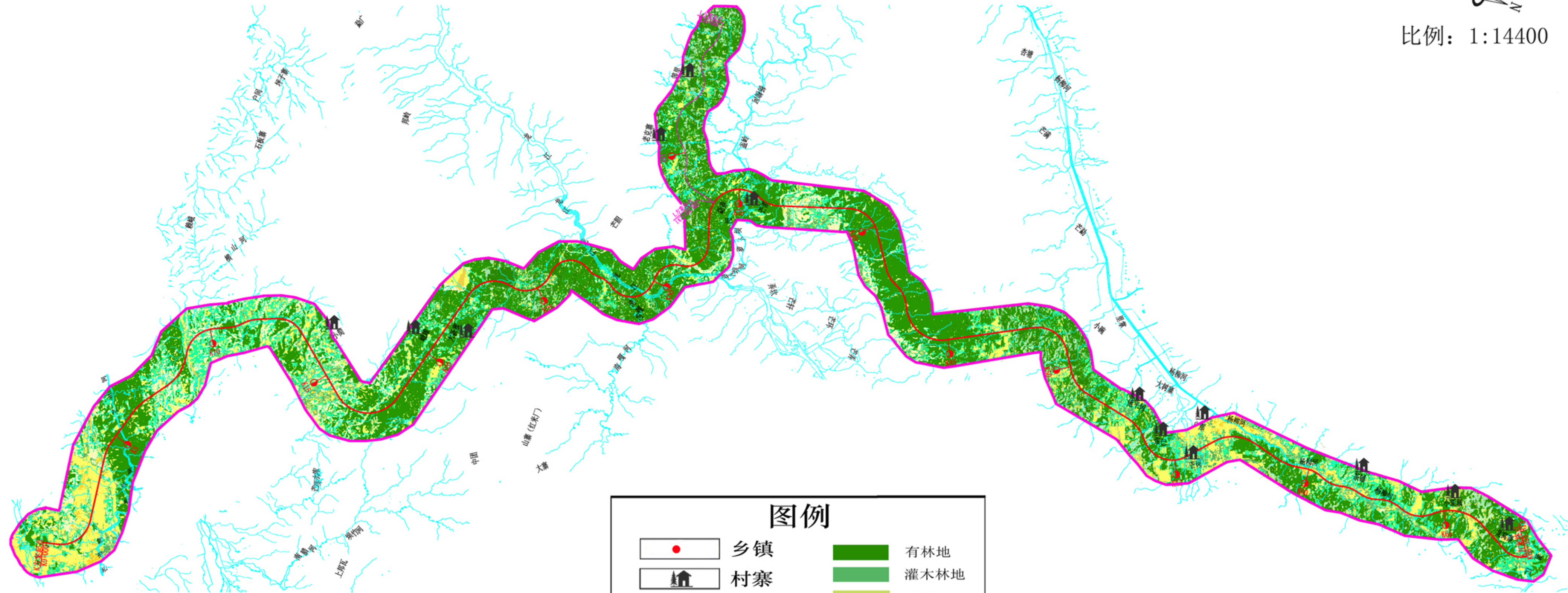
附图5 “三场” 布置图



附图6 监测点位布置图



比例：1:14400



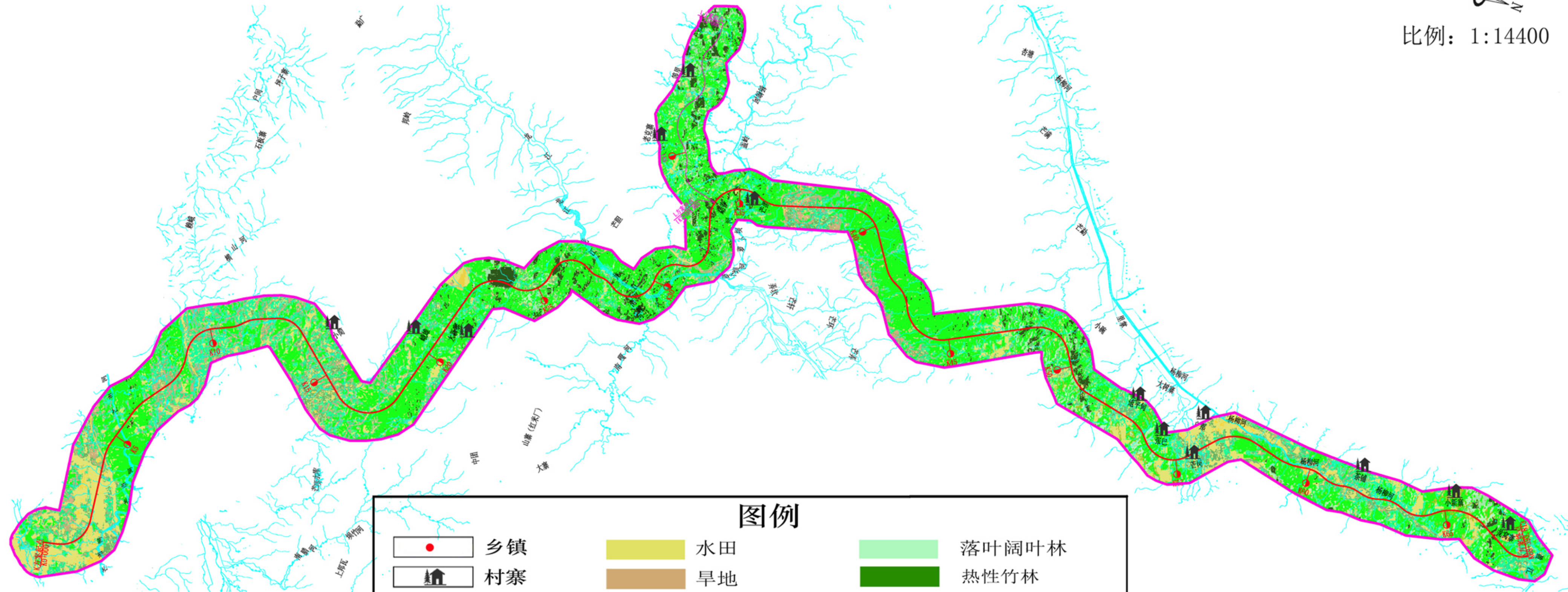
图例

- | | | | |
|--|------|--|------|
| | 乡镇 | | 有林地 |
| | 村寨 | | 灌木林地 |
| | 拟建公路 | | 草地 |
| | 河流水系 | | 水田 |
| | 调查范围 | | 旱地 |
| | | | 园地 |



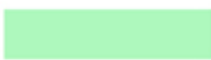



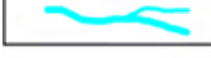




附图7 土地利用现状图



比例：1:14400



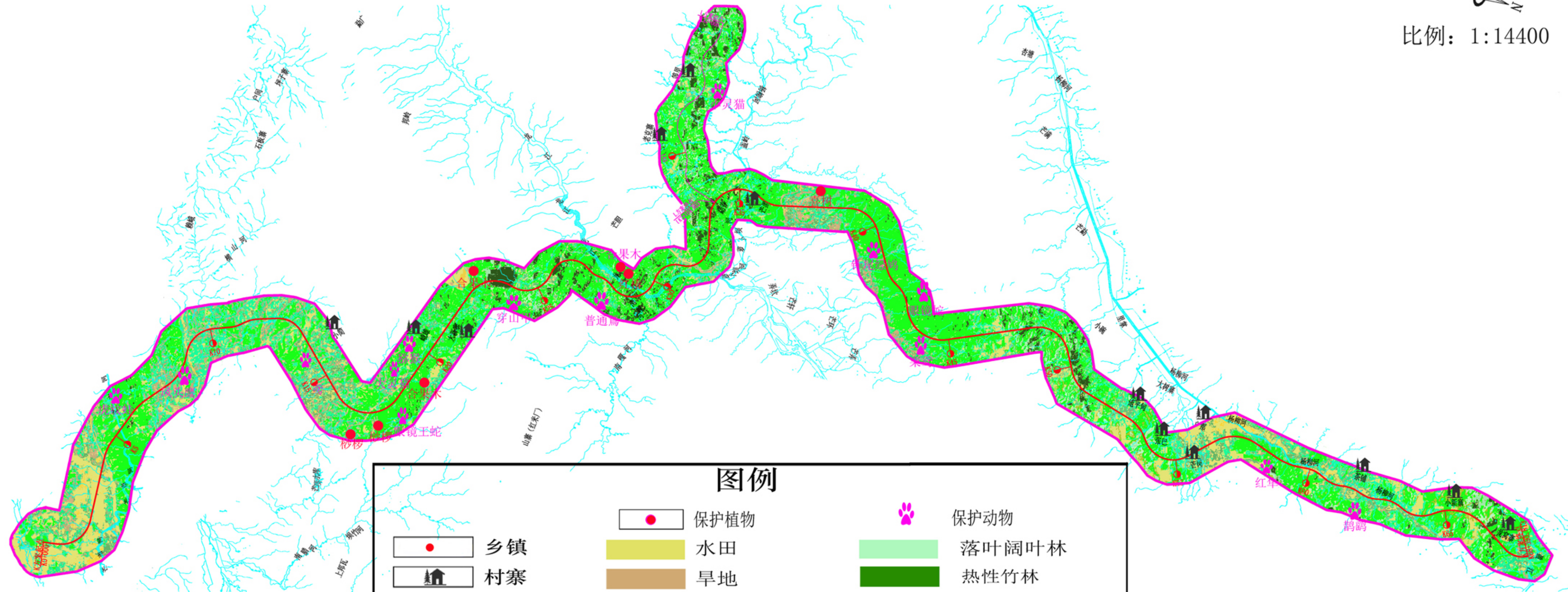
图例

- | | | | | | |
|--|------|---|--------|---|---------|
|  | 乡镇 |  | 水田 |  | 落叶阔叶林 |
|  | 村寨 |  | 旱地 |  | 热性竹林 |
|  | 拟建公路 |  | 果园 |  | 季风常绿阔叶林 |
|  | 河流水系 |  | 稀树灌木草丛 |  | 半常绿季雨林 |
|  | 调查范围 |  | 热性灌丛 |  | 针叶林 |






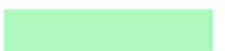



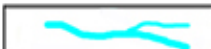


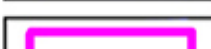




附图9 植被分布现状图



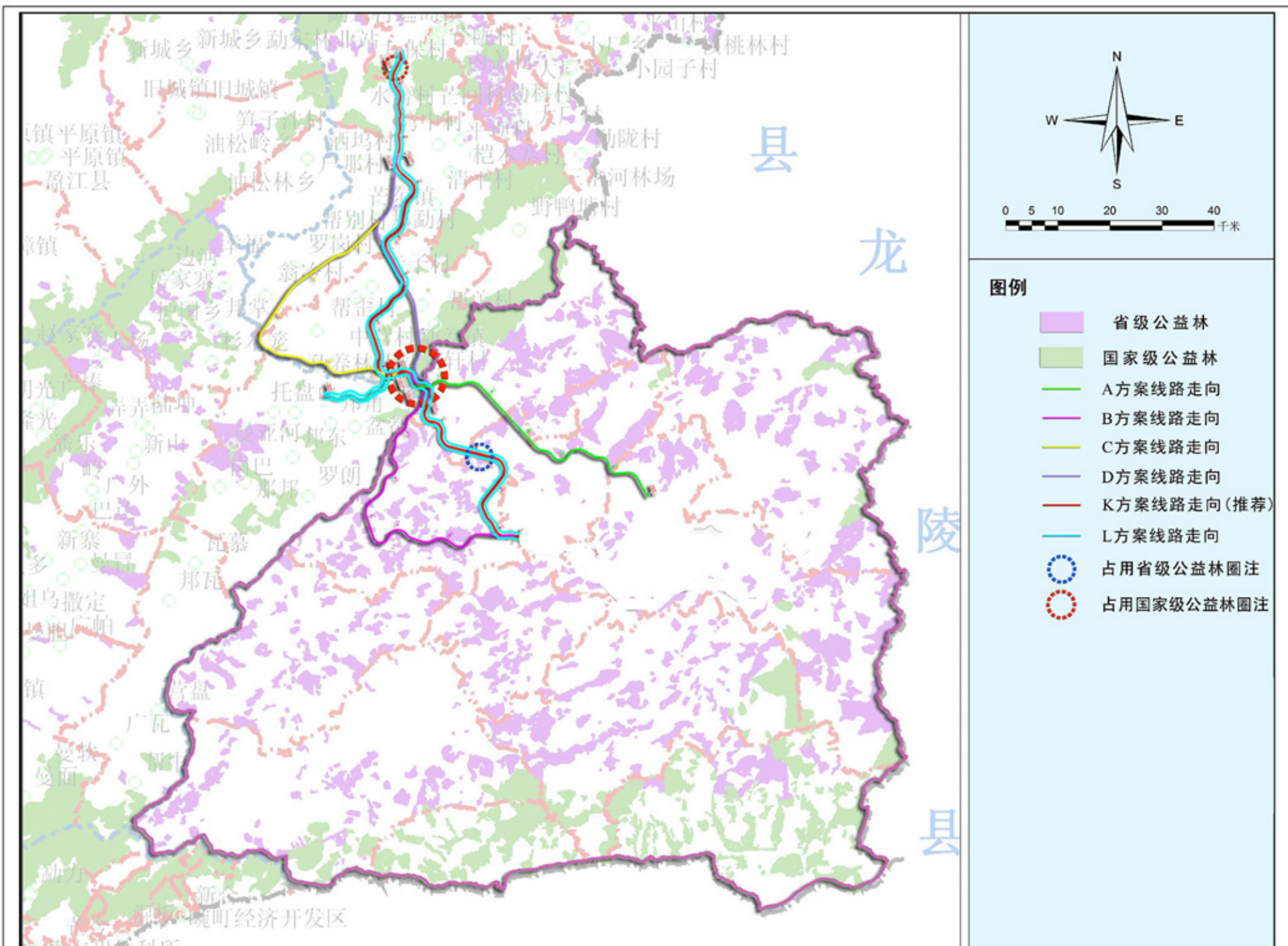
比例：1:14400



图例

- | | | | | | |
|--|------|---|--------|---|---------|
|  | 乡镇 |  | 保护植物 |  | 保护动物 |
|  | 村寨 |  | 水田 |  | 落叶阔叶林 |
|  | 拟建公路 |  | 旱地 |  | 热性竹林 |
|  | 河流水系 |  | 果园 |  | 季风常绿阔叶林 |
|  | 调查范围 |  | 稀树灌木草丛 |  | 半常绿季雨林 |
| | |  | 热性灌丛 |  | 针叶林 |

附图10 保护动植物分布图



附图12 拟建工程沿线公益林分布图

